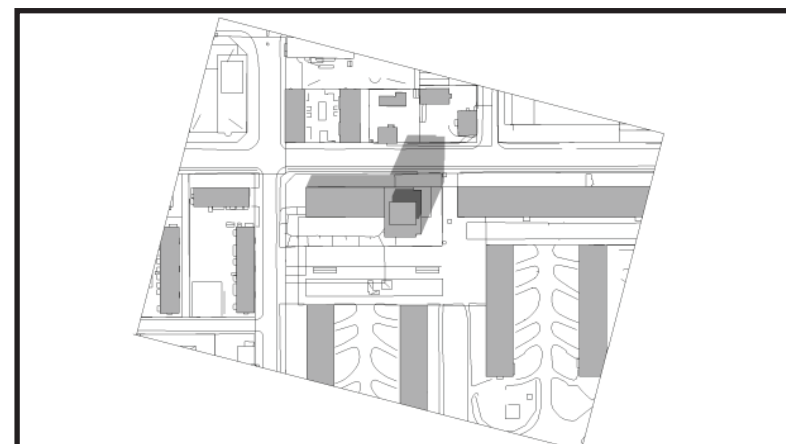
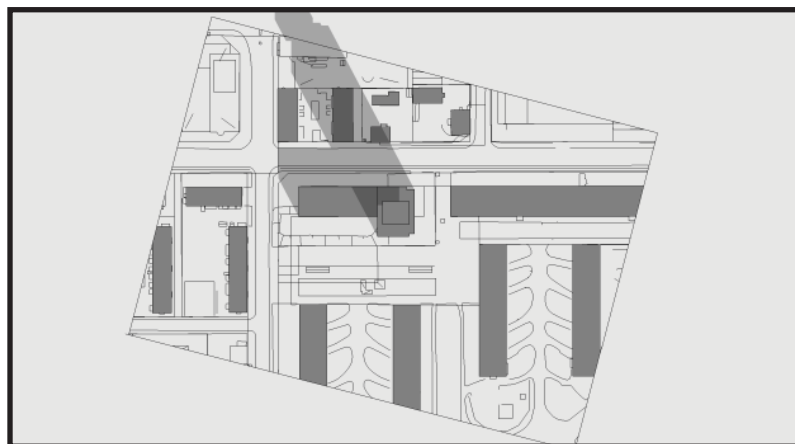


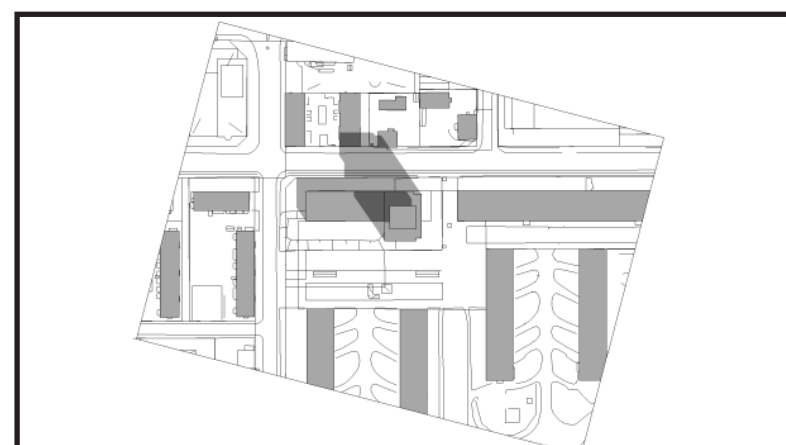
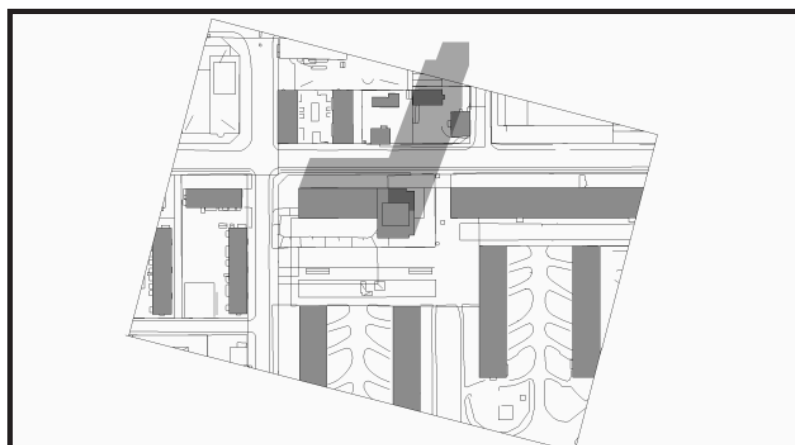
VÅR OCH HÖSTDAGJÄMNING

MIDSOMMAR

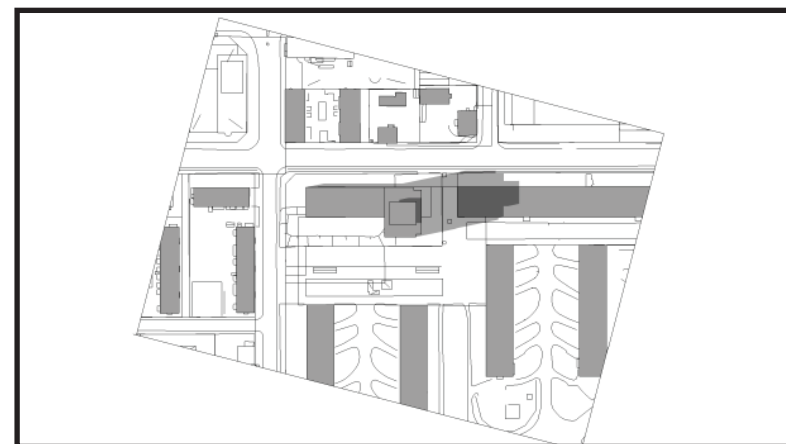
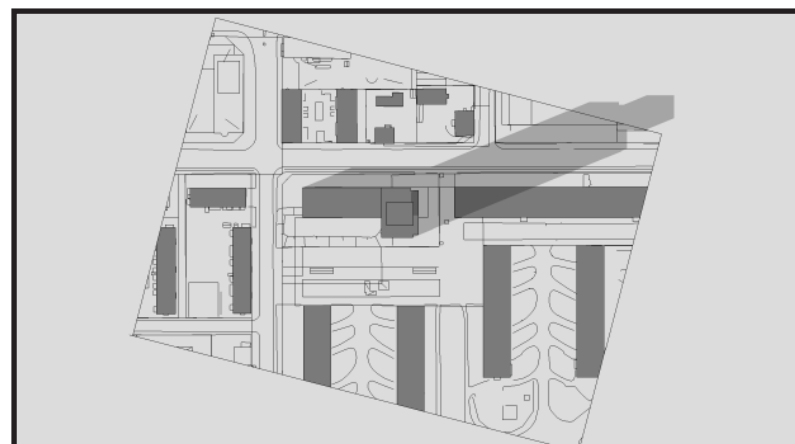
09.00



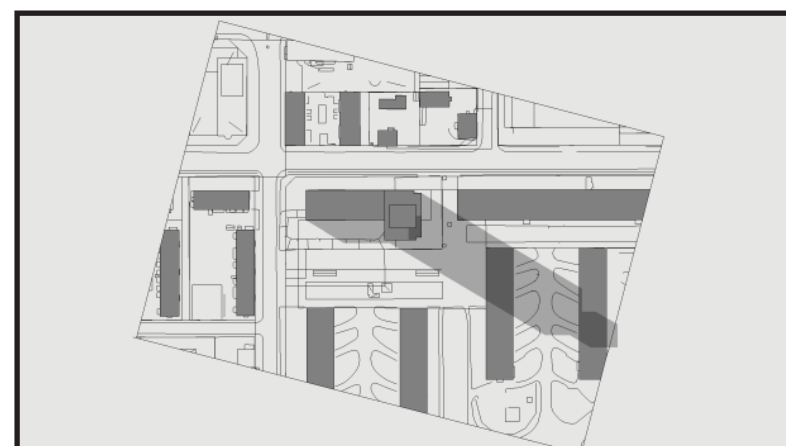
12.00



15.00



18.00

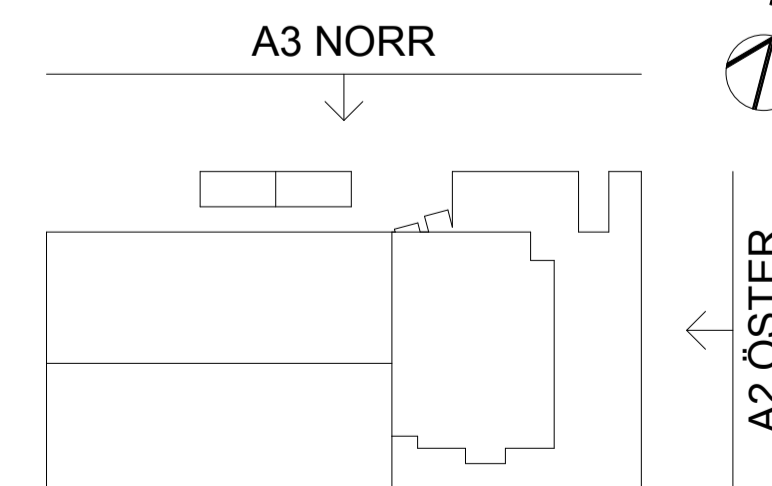
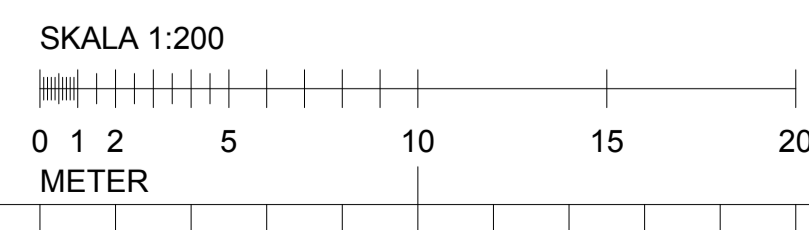




A1 FASAD MOT NORR 1:200



A2 FASAD MOT ÖSTER 1:200



FÖRHANDSKOPIA

| BET | ANT | ÄNDRINGEN AVSER | DATUM | SIGN |
|-----|-----|-----------------|-------|------|
| | | | | |

UNDERLAG FÖR DETALJPLAN

KV HÄGERN 11

VÄSTRA VARVSGATAN 18, LULEÅ
BOSTÄDER, BUTIKS- OCH KONTORSLOKALER



TIRSEN & AILI ARKITEKTER

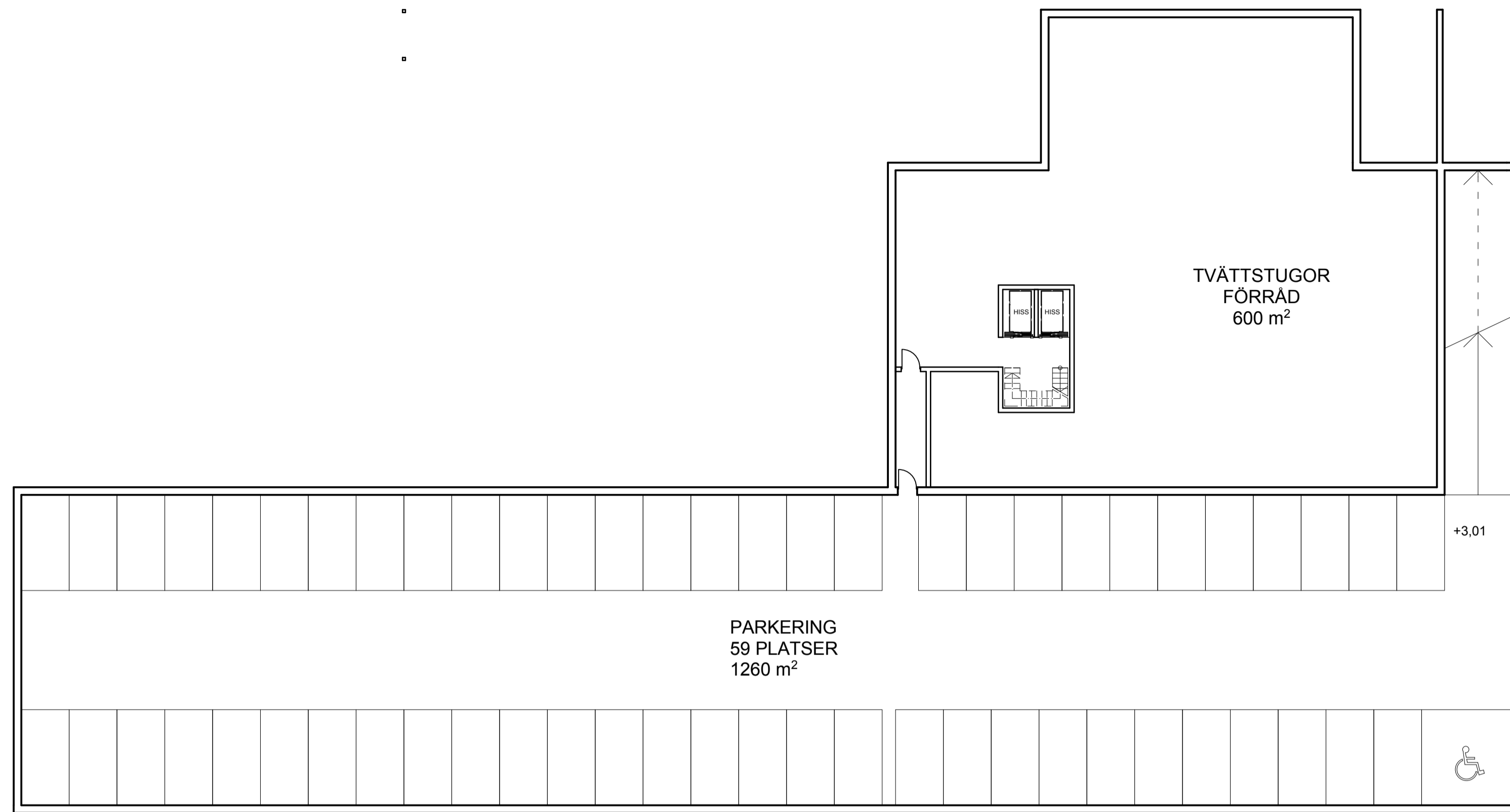
SMEDJEGATAN 17 97033 LULEÅ TEL 0920-203160 FAX 0920-203161

| | | |
|---|--|--|
| K | | |
| V | | |
| E | | |
| M | | |
| I | | |

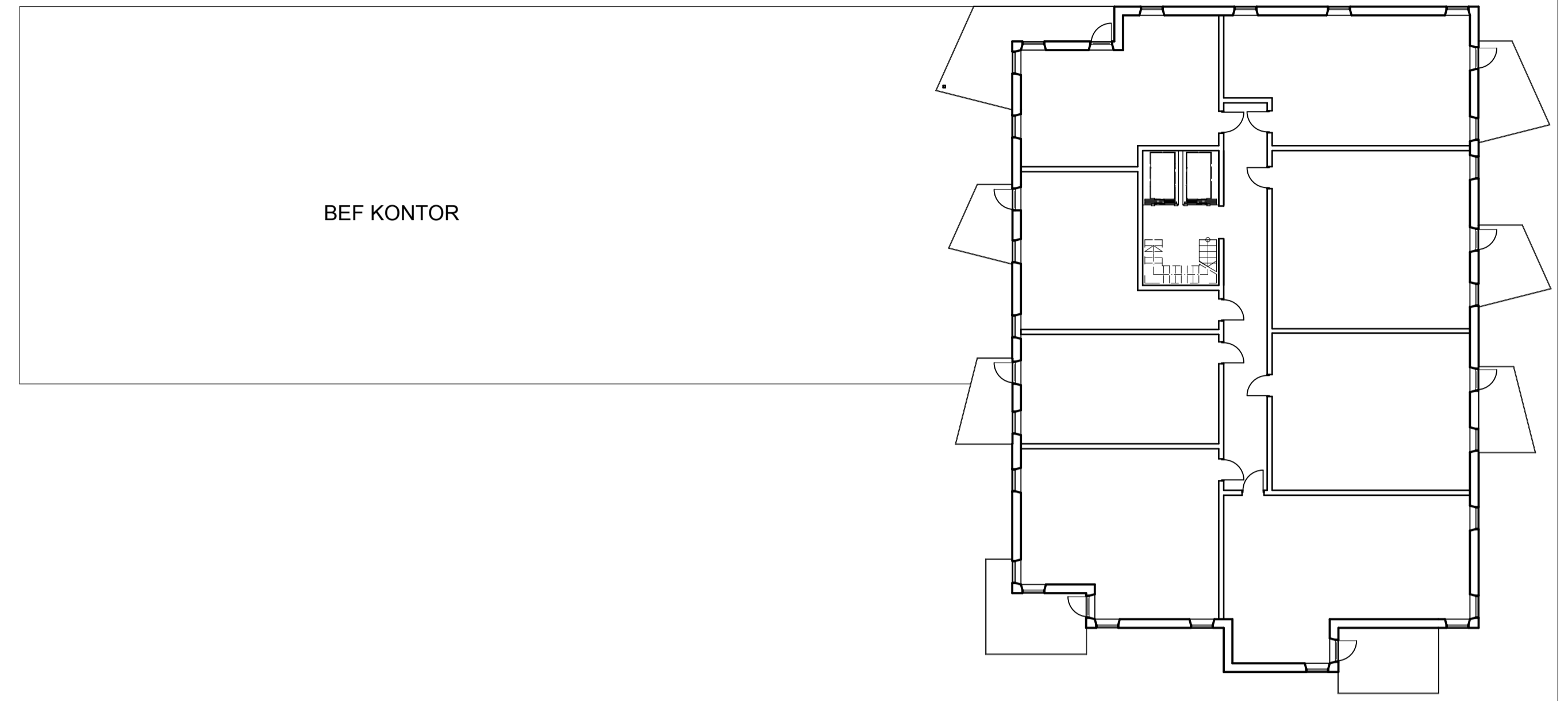
| | | |
|--------------------------|---------------------------|---------------------|
| UPPDRAG NR 5557 05-12 | RITADKONSTR AV LON/ASN | HANDELAGGARE LON |
| DATUM 2012-XX-XX | ANSVARIG BENGT AILI | |

FASADER, ÖVERSIKT

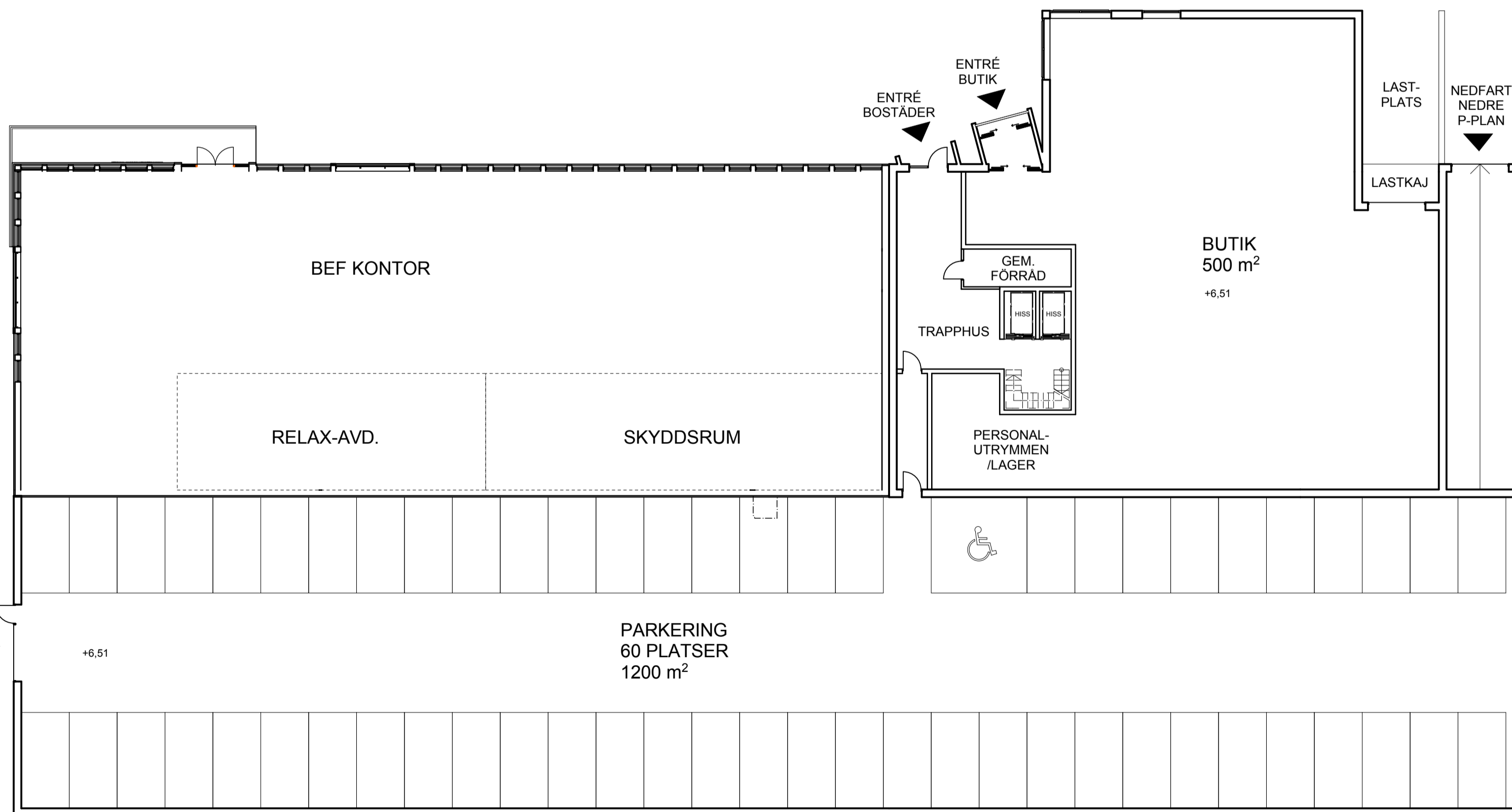
| | | | | | |
|-------|----------------------|--------|-----------|-----|--|
| SKALA | A1 1:200 A3 1:400 | NUMMER | A-40.3-01 | BET | |
|-------|----------------------|--------|-----------|-----|--|



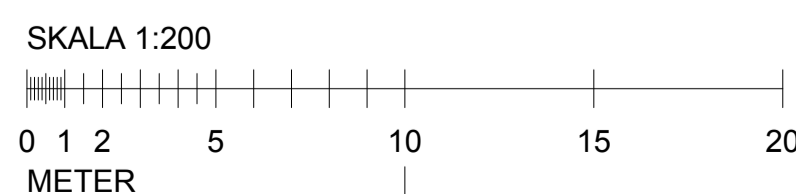
KÄLLARPLAN



TYPPLAN BOSTÄDER



ENTRÉPLAN



| BET | ANT | ÄNDRINGEN AVSER | DATUM | SIGN |
|---|----------------------|-----------------|------------|-------------|
| UNDERLAG FÖR DETALJPLAN | | | | |
| KV HÄGERN 11 | | | | |
| VÄSTRA VARVSGATAN 18, LULEÅ BOSTÄDER, BUTIKS- OCH KONTORSLOKALER | | | | |
|  GALÄREN | | | | |
| TIRSÉN & AILI ARKITEKTER | | | | |
| SMEDJEGATAN 17 97033 LULEÅ TEL 0920-203160 FAX 0920-203161 | | | | |
| K | | | | |
| V | | | | |
| E | | | | |
| M | | | | |
| I | | | | |
| UPPDRAG NR | 5557-05-12 | RITADKONSTR AV | LON/ASN | HANDLAGGARE |
| DATUM | 2014-04-09 | ANSVARIG | BENGT AILI | LON |
| PLANER | | | | |
| SKALA | A1 1:200 A3 1:400 | NUMMER | A-40.1-1 | |